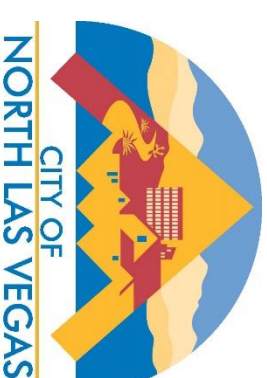


SNWA Activities Update

**City Council Meeting
May 5, 2021**



ADVISORY COMMITTEE

In 2019, the Southern Nevada Water Authority convened a citizens advisory committee to evaluate infrastructure and conservation actions needed to meet future demands.

Committee recommendations included:

- Infrastructure
- Water Resources
- Water Conservation
- Funding



A map of the Las Vegas area, showing the Colorado River, Lake Mead, and various cities and military bases. The map includes a scale bar (0 to 20 miles) and a compass rose. The following locations are labeled:

- BOULDER CITY
- HENDERSON
- LVVWD
- NORTH LAS VEGAS
- NEILLIS AIRFORCE BASE
- Colorado River
- Lake Mead

Red circles highlight specific locations: one in the Henderson area, one near the intersection of I-15 and SR-215, and one near the intersection of I-15 and SR-93.

Southern Nevada's existing regional water system cannot support Southern Nevada's future demands.

- 40% of existing water deliveries have no redundant system
- Inability to accommodate future capacity and new services
- Lack of wastewater infrastructure means valuable return-flow credits are lost

- Southern Nevada's existing regional water system cannot support Southern Nevada's future demands.**
- 40% of existing water deliveries have no redundant system
 - Inability to accommodate future capacity and new services
 - Lack of wastewater infrastructure means valuable return-flow credits are lost

KEY COMMITTEE RECOMMENDATIONS

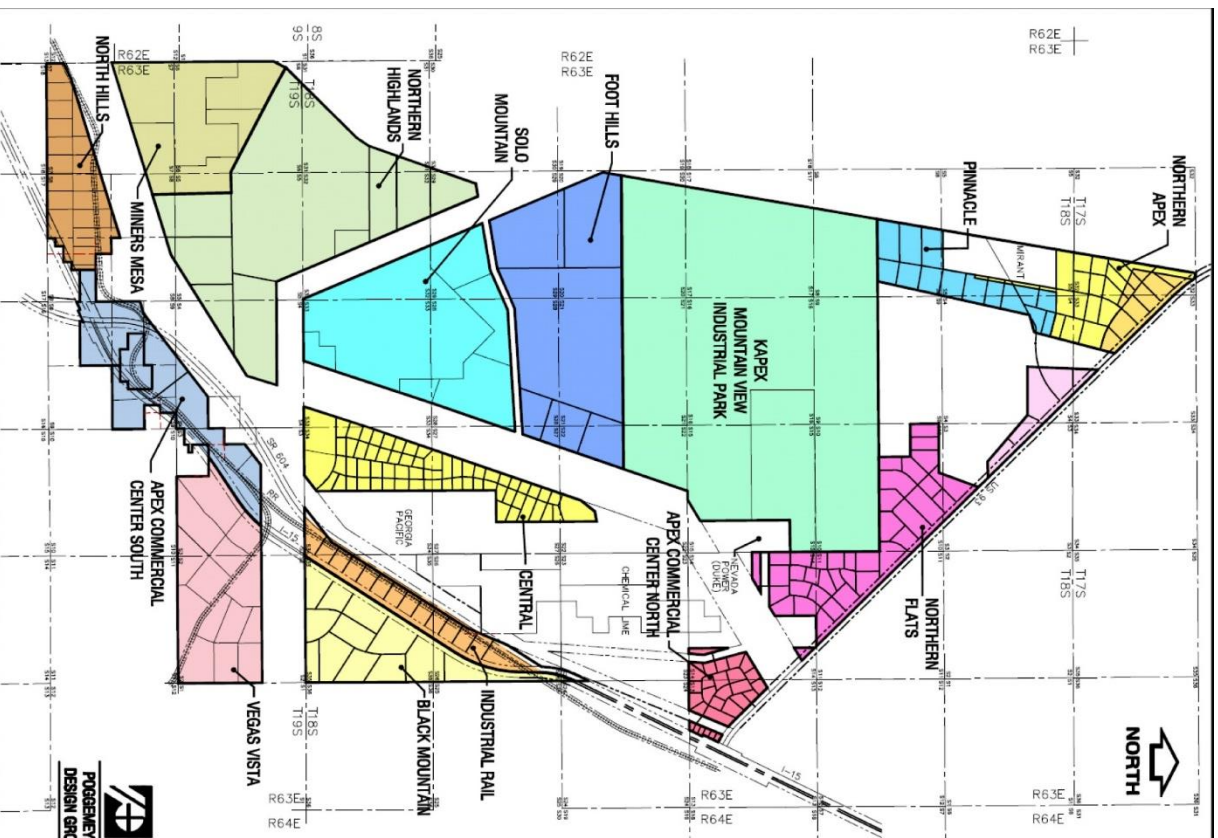
- Include candidate projects totaling \$3.166 billion in the SNWA's Major Construction and Capital Plan (MCCP) ([Approved by NLV City Council December 2020](#))
- Pursue emerging water resource opportunities with Colorado River partners to increase Nevada's water supplies
- Require out-of-valley development to return wastewater to Lake Mead
- Pursue changes necessary to achieve the SNWA's water conservation goal of 105 GPCD by 2035
- Reduce existing non-functional turf acreage by 50% by 2035
- Embed the principles of the SNWA's Non-Functional Turf Resolution in municipal codes and LVVWD Service Rules ([Ordinance 3050 adopted by NLV City Council December 2020](#))

GARNET VALLEY WASTEWATER SYSTEM (\$120 million)

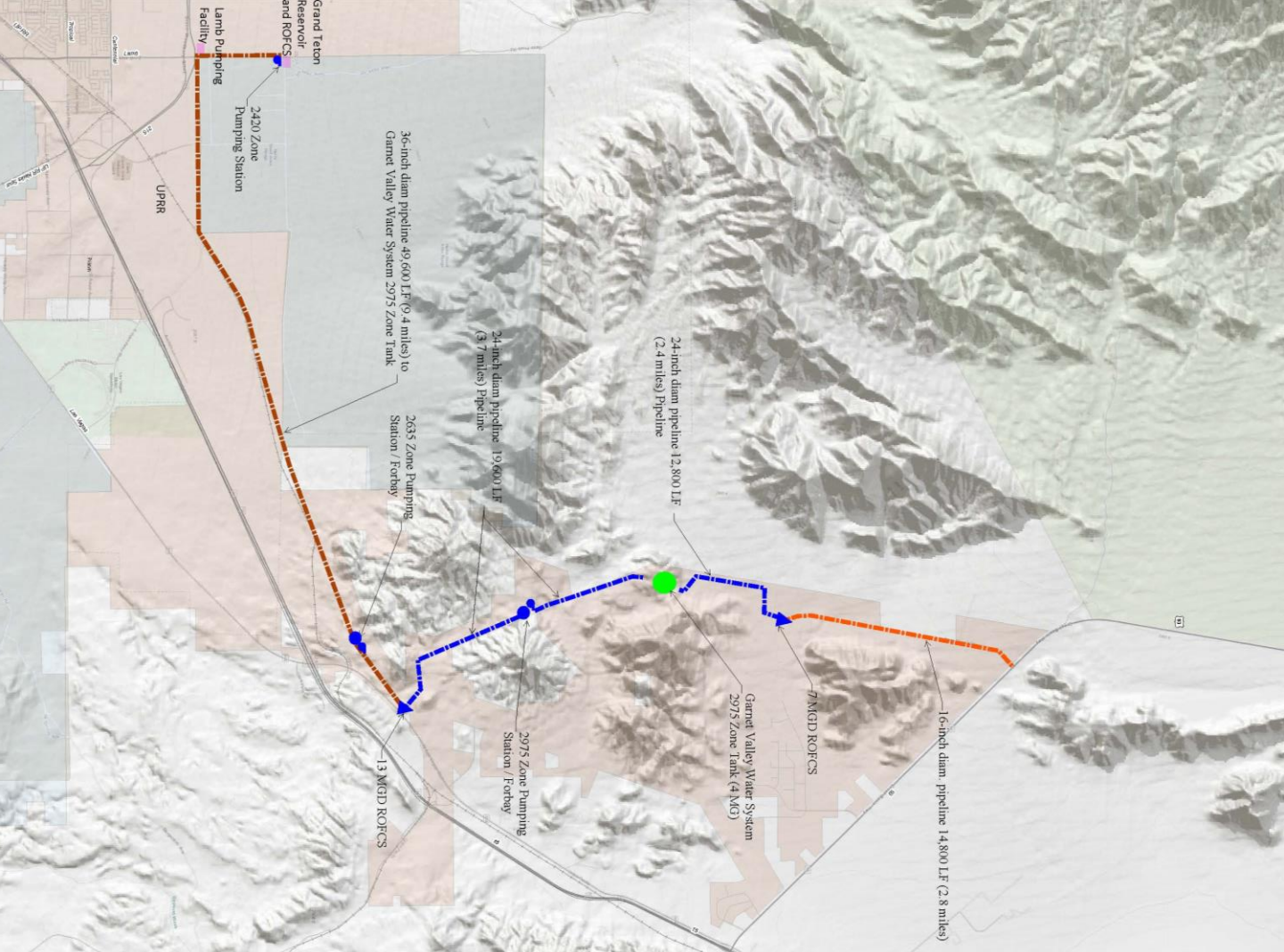
43.3 miles of pipeline (8" to 48")

5-6 wastewater lift stations

8.4 miles force main (14" to 30")



GARNET VALLEY WATER SYSTEM (\$129.8 million)



- 18 miles of pipeline (16" – 36")
- 1 reservoir (4 MG)
- 3 pumping stations (5 MGD/16 hr)
- 2 forebays (1.2 MG/forebay)
- 2 Rate-of-Flow Control Stations (20 MGD total)

APPROVED INCREASES

The committee revised its initial recommendations to implement increases in 2022.

6 YEAR PHASE-IN STARTING 2022								INDEXING
Connection Charge (ENR) <i>Last increased in 2008</i>	2022	2023	2024	2025	2026	2027	2028 ➡	
	Catch-Up Inflation	6.5%	6.5%	6.5%	6.5%	6.5%	6.5%	0.0%
	Current Year Inflation	3.0%	3.0%	3.0%	3.0%	3.0%	3.0%	3.0%
	Total	9.5%	9.5%	9.5%	9.5%	9.5%	9.5%	3.0%

Commodity Charge (CPI) <i>Last increased in 2017</i>	Catch-Up Inflation	2.3%	2.3%	2.3%	2.3%	2.3%	2.3%	0.0%
	Current Year Inflation	2.5%	2.5%	2.5%	2.5%	2.5%	2.5%	2.5%
	Total	4.8%	4.8%	4.8%	4.8%	4.8%	4.8%	2.5%

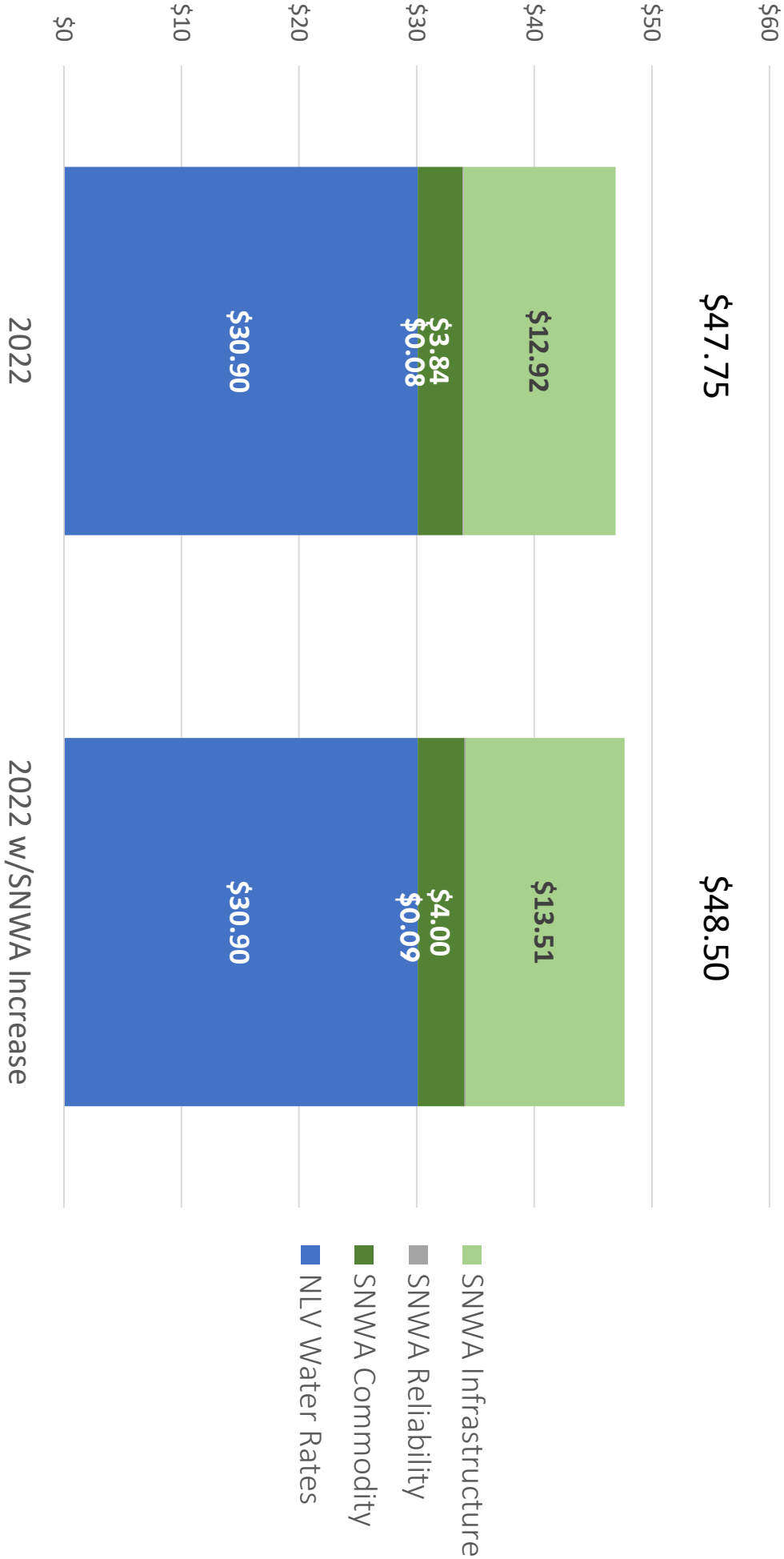
Infrastructure Charge (ENR) <i>Last increased in 2018</i>	Catch-Up Inflation	1.6%	1.6%	1.6%	1.6%	1.6%	1.6%	0.0%
	Current Year Inflation	3.0%	3.0%	3.0%	3.0%	3.0%	3.0%	3.0%
	Total	4.6%	4.6%	4.6%	4.6%	4.6%	4.6%	3.0%

ENR: Engineering News Record – Construction Cost Index, 20 city average
CPI: Consumer Price Index; all items for Urban Consumers (CPI-U) – West Size Class A

SNWA Residential Rates

	Current	6 Year Phase-In						Indexing
	2020	2022	2023	2024	2025	2026	2027	2028
Monthly Commodity Charge								
Per 1,000 gallons	\$0.48	\$0.50	\$0.52	\$0.54	\$0.57	\$0.60	\$0.63	\$0.65
Daily Infrastructure Charge								
5/8" meter size	\$0.4306	\$0.4504	\$0.4711	\$0.4928	\$0.5155	\$0.5392	\$0.5640	\$0.5809
Regional Connection Charge								
(8 or fewer units per acre)								
5/8" meter size	\$4,870	\$5,333	\$5,840	\$6,395	\$7,003	\$7,668	\$8,396	\$8,648

SAMPLE CUSTOMER: TYPICAL SINGLE FAMILY RESIDENTIAL





SNWA Actions Leading to Rate Increases

- IRPAC Recommendations Approved – 9/17/2020
- Business Impact Statement Adoption – 10/15/2020
- Major Construction & Capital Plan Revision – 11/19/2020
- Rate Increase Approved by SNWA – 11/19/2020
- Effective Rate Increase Date – 1/1/2022



SNWA Apex Updates

Water Transmission System

- RFP for design released March 2021
- Anticipate design start by July 2021

Wastewater Collection System

- RFP for design released March 2021
- Anticipate design by July 2021

16" Distribution Waterline

- Consultant agreement approved
- Design Kick-off: April 2021