

**SUPPLEMENTAL INTERLOCAL CONTRACT NO. 1
TROPICAL PARKWAY/LINN LANE, EL CAMPO GRANDE AVENUE TO CC-215**

THIS SUPPLEMENTAL INTERLOCAL CONTRACT NO. 1 made and entered into this 10th day of March, 2016, by and between the City of North Las Vegas, a municipal corporation, hereinafter referred to as CITY; and the Regional Transportation Commission of Southern Nevada, hereinafter referred to as RTC.

W I T N E S S E T H

WHEREAS, RTC approved an interlocal contract on February 12, 2015, for a project to construct roadway widening improvements along Tropical Parkway, provide a connection from Tropical Parkway to CC-215 and improve the Sloan Avenue alignment to El Campo Grande Avenue, hereinafter referred to as "PROJECT," located wholly within the City of North Las Vegas, has been approved by the RTC; and;

WHEREAS, the RTC previously granted "Authorization to Proceed" for construction, engineering and right-of-way other; and

WHEREAS, the CITY desires to change the project boundaries by revising the scope of project; and

NOW THEREFORE, in consideration of the covenants, conditions, agreements and promises of the Parties hereto, the Parties agree to proceed as follows:

SECTION I - SCOPE OF PROJECT; shall be changed to read as follows:

This Interlocal Contract applies to roadway widening improvements along Tropical Parkway and provide a connection from Tropical Parkway to CC-215 and improve the Linn Lane alignment to El Campo Grande Avenue. The improvements will include asphalt pavement, curb and gutter, sidewalk, Light Emitting Diode (LED) streetlights, utility relocations, signage and striping, and any other miscellaneous appurtenances as may be necessary to construct a complete and functional PROJECT.

The remainder of the interlocal contract dated February 12, 2015, shall remain unchanged.

...

...

...

...

...

...

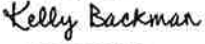
IN WITNESS WHEREOF, this Supplemental Interlocal Contract No. 1 is hereby executed as of the date first set forth below:


Date of Commission Action:

March 10, 2016


ATTEST:

REGIONAL TRANSPORTATION
COMMISSION OF SOUTHERN NEVADA

DocuSigned by:

A048ED203B56401...
KELLY BACKMAN
Executive Secretary

DocuSigned by:

9BD793A7A53847A..
LAWRENCE L. BROWN, III
Chairman

APPROVED AS TO LEGALITY AND FORM:

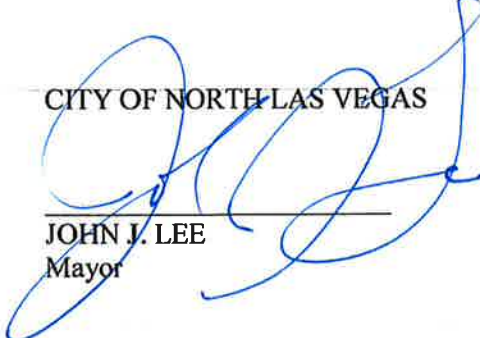
DocuSigned by:

0E6FC228B31D4A3...
GREG GILBERT
Outside General Counsel, RTC

Date of City Council Action:

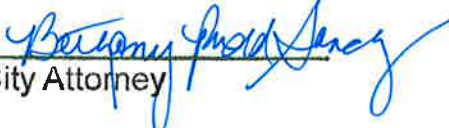
April 20, 2016

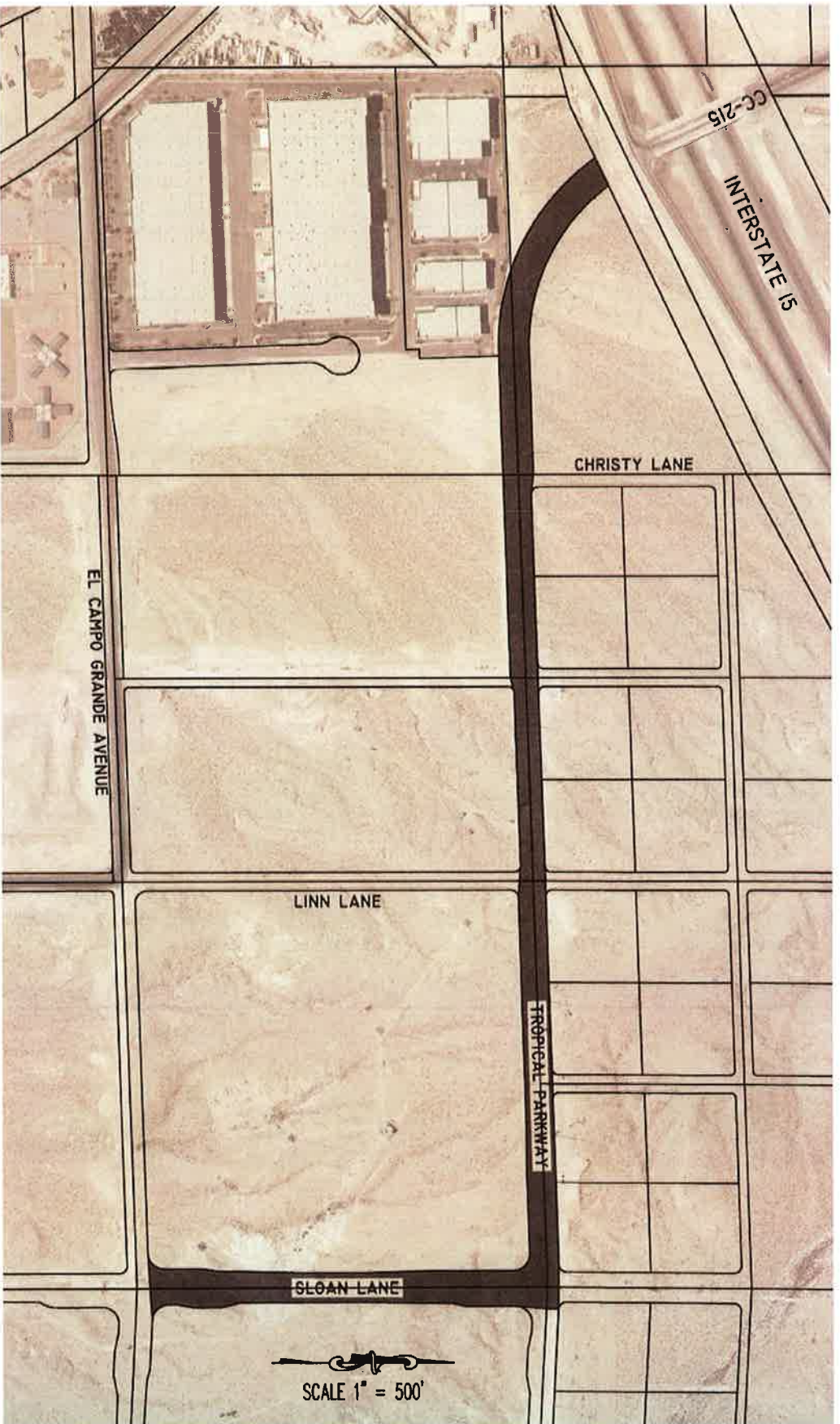
ATTEST:


AMANDA DILLARD
Acting City Clerk

CITY OF NORTH LAS VEGAS

JOHN J. LEE
Mayor

Approved as to form:


City Attorney



PROPOSED ALIGNMENT

DEPARTMENT OF PUBLIC WORKS
ENGINEERING AND CONSTRUCTION SERVICES DIVISION

TROPICAL PARKWAY CONNECTOR TO CC-215



SCALE: 1" = 500'

DRAWING NAME: 10401 Tropical Pkwy Connector

DRAWN BY: T Cochran

DATE: 9/17/2014

SHEET NUMBER 1 OF 1